

ADOPT A CENTER PROGRAM

SPONSORSHIP OPPORTUNITIES

If your organization or company wants to help our community centers in a big way, consider becoming a sponsor of our **Adopt a Center** program. Contribute through **in-kind or monetary donations** at one of the levels below.

PRESENTING SPONSOR \$15,000

- ▶ **Prominent placement of logo** with program title ("Presented by")
- ▶ **Logo on the department's website** and the following **marketing materials** from Nov. 15 – Jan 15:
 - **Digital Ads:** Featured at all sports facilities, including Lou Berliner Sports Park, and in eight (8) community centers.
 - **Social Media Tags:** Included in all Adopt a Center social media posts and four (4) social media posts highlighting your sponsorship.
 - **Newsletter Feature:** Recognition in the department's digital newsletter.
 - **Exclusive Ad:** One (1) ad in the 2025 Lou Berliner Sports Park Map.
- ▶ **Media Recognition:** Acknowledged as the Adopt a Center Presenting Sponsor in media coverage.
- ▶ **Tabling Opportunities:** Engage directly with the community at select events.*

ANGEL PARTNER \$10,000

- ▶ **Logo on the department's website** and the following **marketing materials** from Nov. 15 – Jan 15:
 - **Digital Ads:** Featured at all sports facilities, including Lou Berliner Sports Park, and in eight (8) community centers.
 - **Social Media Tags:** Four social media (4) posts highlighting your sponsorship.
 - **Newsletter Feature:** Recognition in the department's digital newsletter.
 - **Exclusive Ad:** One (1) ad in the 2025 Lou Berliner Sports Park Map.
- ▶ **Media Recognition:** Acknowledged as an Adopt a Center sponsor in media coverage
- ▶ **Tabling Opportunities:** Engage directly with the community at select events.*

CELEBRATION PARTNER \$7,500

- ▶ **Logo on the department's website** and the following **marketing materials** from Dec. 15 – Jan 15.
 - **Digital Ads:** Featured at eight (8) community centers.
 - **Social Media Tags:** Tags in three (3) social media posts.
 - **Newsletter Feature:** Recognition in the department's digital newsletter.
 - **Exclusive Ad:** One (1) ad in the 2025 Lou Berliner Sports Park Map.
- ▶ **Tabling Opportunities:** Engage directly with the community at select events.*

* Subject to availability



Questions? Contact Alaina Reimer at
AMReimer@columbus.gov.



THE CITY OF
COLUMBUS
RECREATION AND PARKS

FESTIVE PARTNER \$5,000

- ▶ **Name (in text) on the department's website** and the following **marketing materials** from Dec. 15 – Jan 15.
 - **Digital Ads:** Featured at eight (8) community centers.
 - **Social Media Tags:** Tags in two (2) social media posts.
 - **Newsletter Feature:** Recognition in the department's digital newsletter.
 - **Exclusive Ad:** Name (in text) included in one (1) ad in the 2025 Lou Berliner Sports Park Map.
- ▶ **Tabling Opportunities:** Engage directly with the community at select events.*

HOLIDAY PARTNER \$2,500

- ▶ **Name (in text) on the department's website** and the following **marketing materials** from Dec. 15 – Jan 15.
 - **Digital Ads:** Featured at eight (8) community centers.
 - **Social Media Tags:** Tags in two (2) social media posts.
 - **Newsletter Feature:** Recognition in the department's digital newsletter.
 - **Exclusive Ad:** Name (in text) included in one (1) ad in the 2025 Lou Berliner Sports Park Map.
- ▶ **Tabling Opportunities:** Engage directly with the community at select events.*

JOLLY PARTNER \$1,000

- ▶ **Name (in text) displayed on the department's website** from Dec. 15 – Jan 15.
 - **Social Media Tags:** Tags in one (1) social media posts.

* Subject to availability



OUR STATS

Department's Website

3,700,000+ page views per year

Department's E-Newsletter

Circulation 68,000+ recipients

Lou Berliner Sports Park Annual attendance of 119,000 visitors.
60,000 parking maps distributed annually.

2,600,000 + Social Media Impressions

across Facebook, Instagram and Twitter



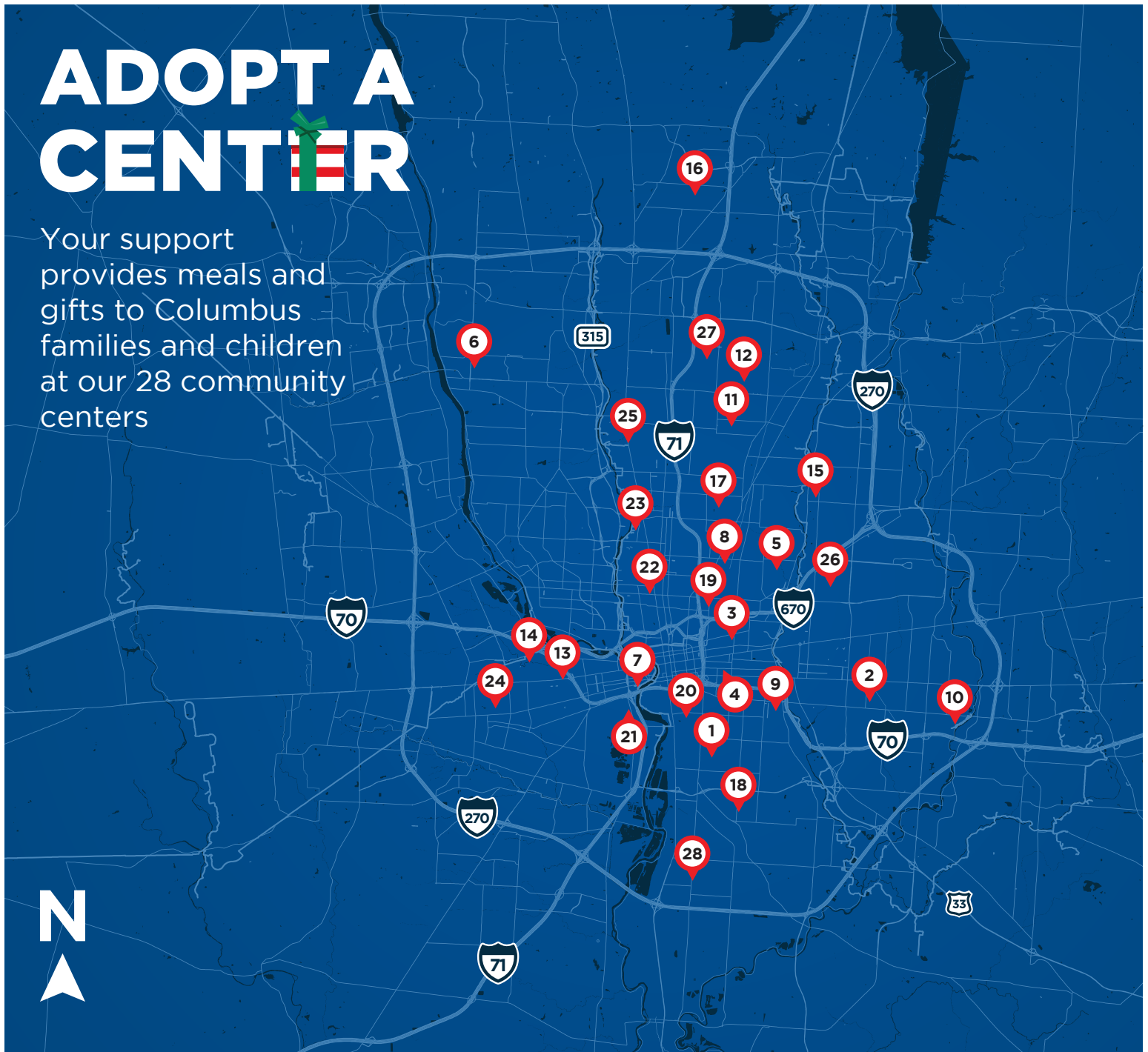
Questions? Contact Alaina Reimer at
AMReimer@columbus.gov.



THE CITY OF
COLUMBUS
RECREATION AND PARKS

ADOPT A CENTER

Your support provides meals and gifts to Columbus families and children at our 28 community centers



1 BARACK
580 Woodrow Ave. | 43207

2 BARNETT
1184 Barnett Rd. | 43227

3 BEATTY
247 N. Ohio Ave. | 43203

4 BLACKBURN
263 Carpenter St. | 43205

5 BRETNELL
1280 Brentnell Ave. | 43219

6 CARRIAGE PLACE
4900 Sawmill Rd. | 43235

7 DODGE
667 Sullivant Ave. | 43215

8 DOUGLAS
1250 Windsor Ave. | 43211

9 DRIVING PARK
1100 Rhoads Ave. | 43206

10 FAR EAST
1826 Lattimer Dr. | 43227

11 FEDDERSEN
3911 Dresden St. | 43224

12 GILLIE*
2100 Morse Rd. | 43229

13 GLENWOOD
1888 Fairmont Ave. | 43223

14 HOLTON
303 N. Eureka Ave. | 43204

15 HOWARD
2505 N. Cassady Ave. | 43219

16 LAZELLE WOODS
8140 Sancus Blvd. | 43081

17 LINDEN
1254 Briarwood Ave. | 43211

18 MARION FRANKLIN
2801 Lockbourne Rd. | 43207

19 MILO GROGAN
862 E. 2nd Ave. | 43201

20 SCHILLER
1069 Jaeger St. | 43206

21 SULLIVANT GARDENS
755 Renick St. | 43223

22 THOMPSON
1189 Dennison Ave. | 43201

23 TUTTLE PARK
240 W. Oakland Ave. | 43201

24 WESTGATE
455 S. Westgate Ave. | 43204

25 WHETSTONE
3923 N. High St. | 43214

26 WILLIAM H. ADAMS
854 Alton Ave. | 43219

27 WOODWARD PARK
5147 Karl Rd. | 43229

28 SCIOTO SOUTHLAND
3901 Parsons Ave. | 43207